

## STORAGE AND DISPOSAL

Storage: Store in a cool area (40-95°F/5-35°C). DO NOT FREEZE, DO NOT EXCEED 105°F/40°C for a period in excess of 24 hours. Ensure good air circulation around each container. When kept under proper storage our proprietary technologies and advanced packaging permit shelf life of 2 plus years. Do not use if incorrectly stored. Disposal: Nonrefillable container. Product and packaging waste, or unused, outdated product, may be disposed of on site or at any approved waste disposal facility in accordance with Federal and local regulations. Please triple-rinse and recycle this aluminum bottle.

## PRECAUTIONARY STATEMENTS

- Do not get in eyes, on skin or on clothing.
- Wash hands, forearms, and other exposed areas thoroughly after handling.
- Do not eat, drink, or smoke when using this product.
- Do not breath vapors, mist, or spray.

## FIRST AID

### IF SWALLOWED:

- May upset the gastrointestinal tract.
- Have person sip a glass of water if able to swallow.
- Do not induce vomiting.

IF INHALED: Move person to fresh air.

IF IN EYES: Hold eye open and rinse slowly and gently with water for 15-20 minutes. Remove contact lenses, if present, after the first 5 minutes, then continue rinsing eye.

### IF ON SKIN OR CLOTHING:

(1) Take off contaminated clothing. (2) Rinse skin immediately with plenty of water for 15-20 minutes.

## ENVIRONMENTAL HAZARDS

No known effect to humans and livestock, no known pollution to water or soil. Best land management practices should be used at all times.

Biological Control Agent containing live Entomopathogenic Nematode parasitic microorganisms that control mosquito larvae and pupae.

Entomopathogenic nematodes (EPN) are exceptionally safe biological control agents. EPN and their associated bacteria are harmless to mammals and plants. This high degree of safety means that applicators do not require safety equipment. They are non-toxic to people and livestock and do not pollute water, soil or the environment.

## HOT LINE NUMBER

Have the product container or label with you when calling a poison control center or doctor, or going for treatment. For emergency information call the National Pesticides Information Center 1-800-858-7378, 6:30 AM to 4:30 PM Pacific time (PT), seven days a week. During other times, call the poison control center 1-800-222-1222.

## DIRECTIONS FOR USE

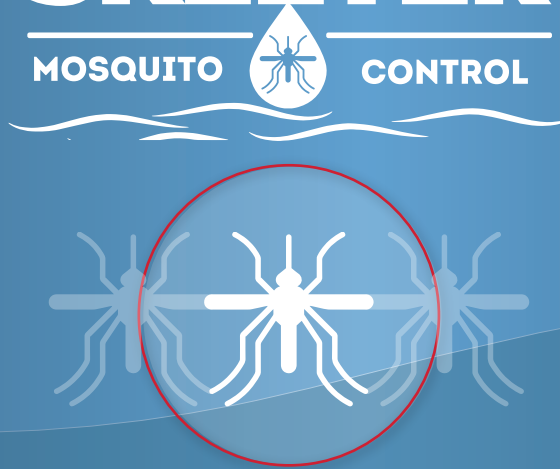
Shake Skeeter® bottle to mix product thoroughly. Add water to spray tank, then add required amount of Skeeter, top off with water as needed. Adjust rates depending on levels of mosquito and midge. Mix rate for Skeeter® is 11mL to 44mL per 1L of water for coverage up to 1,000 sqft of surface water sprayed. 16oz to 64oz of Skeeter® per 10 gallons of water in spray tank for coverage up to 1 surface acre of water sprayed.

It is a violation of Federal Law to use this product in a manner inconsistent with it's labeling. Use spray solution within 48 hrs; always agitate before spraying. Once open, store in a cool dry place and use within 30 days.



# SKEETER

## MOSQUITO CONTROL



## APPLICATION TABLE

**TIME TO USE:** At start of mosquito/midge infestation, reapply every 30 days, or as reinfestations warrant.

BACKPACK /TANK MIX	MIX RATE
Fresh water, catch basins, old tires, run-off/drainage, livestock troughs, low organic matter in water.	1.6oz to 3.2oz per 1 gallon of water, coverage up to 4,300 sqft. 16oz to 32oz per 10 gallons of water, coverage up to 1 surface acre of water.
BACKPACK /TANK MIX	MIX RATE
Brackish water, swimming pools, light to medium organic matter in water.	2.4oz to 4.8oz per 1 gallon of water, coverage up to 4,300 sqft. 24oz to 48oz per 10 gallons of water provides coverage up to 1 surface acre of water.
BACKPACK /TANK MIX	MIX RATE
Dairy ponds, sewage, high organic matter in water.	4.8oz to 6.4oz per 1 gallon of water, coverage up to 4,300 sqft. 48oz to 64oz per 10 gallons of water provides coverage up to 1 surface acre of water.
DRONE APPLICATION	MIX RATE
Use higher concentration for higher organic matter in water.	16oz - 64oz per 2 gallons of water, coverage up to 1 surface acre of water.
HELICOPTER OR FIXED WING AIRCRAFT	MIX RATE
Use higher concentration for higher organic matter in water.	1.6oz to 6.4oz per 1 gallon of water, coverage up to 4,300 sqft. 16oz to 64oz per 10 gallons of water provides coverage up to 1 surface acre of water.

## BIOCIDE: MOSQUITO & MIDGE

### ACTIVE INGREDIENTS

Garlic Oil ..... 20.00%  
Heterorhabditis Megidis ... 2.00%  
Soybean Oil ..... 1.00%  
INERT INGREDIENTS\* ..... 77.00%  
TOTAL ..... 100.00%

\*Water, Egg Solids

KEEP OUT OF REACH OF CHILDREN  
**CAUTION**

NET CONTENTS: 32 fl oz (0.946L)

MANUFACTURED BY:



12600 West Frontage Road,  
Burnsville MN 55337  
Phone: 1-833-476-7761  
www.groproag.com



Crop Areas: Skeeter may be applied to irrigated croplands after flooding to control mosquitoes and midge. Examples; vineyards, berry fields, rice fields, fruit and nut orchards, date palm orchards, and bogs. Irrigated pastures may be treated after each flooding without the removal of grazing livestock.

SKEETER® is comprised of absolute botanicals and Entomopathogenic nematodes (Heterorhabditis megidis). Our absolute botanicals penetrate larvae and pupae and coat the body inducing a central nervous system destruction and also destroys eggs. The nematodes are extraordinarily lethal to mosquito and midge larvae and pupae yet safe for plants and animals. This entomopathogenic nematode is an endoparasite that uses host larvae to stay alive and reproduce.

SKEETER® uses nematode juveniles to seek out mosquito larvae/pupae and initiate infections. The nematodes penetrate the larvae/pupae body cavities, usually via natural body openings or areas of thin cuticle. Inside the body cavity, juveniles release symbiotic bacteria from their gut into the insect's blood. In the blood, multiplying nematode-bacterium cause septicemia and kill their insect hosts usually within 48 hours after infection. The nematodes feed on the multiplying bacteria, mature into adults, reproduce and then emerge as infective juveniles from the host cadaver to seek new larvae and pupae in their environment.

## EFFICACY

Effective against various Culex, Aedes, and other Mosquito larvae and pupae plus various Midges.

To the extent consistent with applicable law, Seller makes no warranty, expressed or implied, concerning the use of this product other than indicated on the label. To the extent consistent with applicable law, Buyer assumes all risks of use and handling of this material when such use and handling are contrary to label instructions.

ENVIRO LINE

ENVIRO LINE