



PYRIPROXYFEN	GROUP	7C	INSECTICIDE
--------------	-------	----	-------------

# Sumilarv<sup>®</sup> 0.5G

Specimen Label

- Controlled release insect growth regulator formulation to break mosquito life-cycle
- Prevents adult mosquito emergence (*including those which may transmit West Nile Virus*)
- Prevents mosquitoes from becoming breeding, biting adults
- Easy to apply sand granule



KEEP OUT OF REACH OF CHILDREN

## CAUTION

See Inside for First Aid and Precautionary Statements

### ACTIVE INGREDIENTS:

2-[1-Methyl-2-(4-phenoxyphenoxy) ethoxy] pyridine.....	0.50%
OTHER INGREDIENTS .....	99.50%
	100.00%

### DIRECTIONS FOR USE

It is a violation of Federal law to use this product in a manner inconsistent with its labeling.

### READ ALL DIRECTIONS COMPLETELY BEFORE USE.

Before making the first application of the season, it is advisable to consult with the state or tribal agency with primary responsibility for pesticide regulation to determine if other regulatory requirements exist.

Do not apply more than 0.1 lbs. pyriproxyfen per acre per year or (20 lbs. of Sumilarv<sup>®</sup> 0.5G/acre/year).

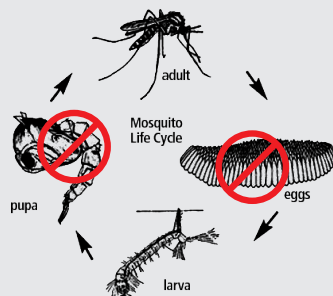
Do not apply or allow drift onto pastureland, cropland, or potable water supplies.

In the treatment of corral lots, feedlots, swine lots and zoos, cover any exposed drinking water, drinking water fountains, and animal feed before application.

### MOSQUITO SPECIES CONTROLLED:

Pyriproxyfen effectively controls several mosquito species which can vector West Nile Virus, Dengue, Eastern equine encephalitis (EEE), Western equine encephalitis (WEE), and St. Louis encephalitis (SLE), and dog heartworm in the USA. These include:

- Aedes aegypti*
- Ae. albopictus*
- Ae. vexans*
- Anopheles quadrimaculatus*
- Culex pipiens*
- Cx. quinquefasciatus*
- Cx. tarsalis*
- Cx. restuans and other Cx. spp.*
- Ochlerotatus stimulans*
- Ochlerotatus nigromaculis*
- Ochlerotatus taeniorhynchus*
- Ochlerotatus sollicitans*
- Ochlerotatus triseriatus*
- Psorophora columbiae*



Introduction of Sumilarv 0.5G into larval habitats where mosquitoes breed and develop will prevent adult mosquito emergence and affects reproductive viability of exposed mosquito eggs and adult female mosquitoes. Frequency of application will depend on three factors: dose rate, water quality (e.g. pollution) and dilution caused by rainfall or removal and replenishment of water within the treatment site. Generally repeat treatment every 4 to 5 weeks, if rain events are frequent or significant. Note: presence of actively swimming larvae after a Sumilarv 0.5G treatment is normal. Sumilarv 0.5G does not act until the pupal stage of a mosquito.

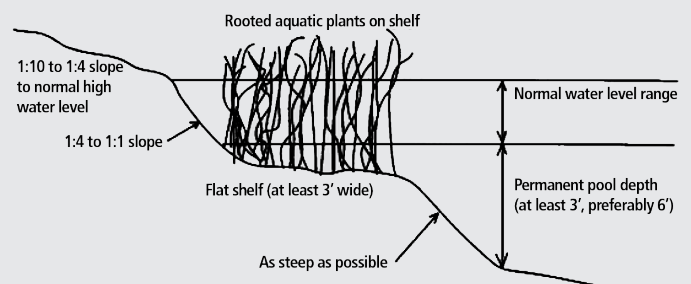
### APPLICATION TO CATCH BASINS & WATER RETENTION PONDS

Individual catch basins are one of the main breeding sites for mosquitoes that can transmit West Nile virus and cause biting nuisance in urban, suburban and rural environments. Sumilarv 0.5G can be applied to catch basins at the rate specified on this label.

The granules may be applied as a pre-treatment to mosquito breeding catch basins or during the season to catch basins containing mosquito larvae. Once applied, Sumilarv 0.5G will be unaffected by dry, hot, cold or sunny conditions and will begin working when the catch basin is flooded during rain events until the active ingredient degrades below effective levels.

Treatments should be repeated every 4-5 weeks (28-35 days). More frequent applications may be necessary to achieve control of mosquito larvae if frequent rain events flush pyriproxyfen out of the catch basins.

### Typical Water Retention Pond or Storm Water Catch Basin



**To determine the volume of water in gallons for a specific treatment site, use the following formulation and calculation method:**

Total cu. ft. of target treatment site (ft. <sup>3</sup>) = surface area (ft. <sup>2</sup>) x average depth (ft.)

Note: 7.5 gallons per cu. ft.

Total water volume = Total cu. ft. of treatment site x 7.5 gallons

**Application Rates to Use for the Control of Mosquito Larvae**

Treatment site (Volume of Water in Gallons)	Water Depth Less than or Equal to (ft.)	Amount of Sumilarv 0.5G (grams)	lb. AI Sumilarv 0.5G/acre based on 1 or 2 basins/acre
0 – 500	1	10	0.00011
500 – 1500	2	30	0.00033
1500 – 3000	4	60	0.00066
3000 – 4500	6	90	0.00099
4500 – 6000	8	120	0.00132

Sumilarv 0.5G can be applied only to sites that do not drain into natural water bodies. Apply at the rate specified in the application rate table above to the following sites:

**TEMPORARY OR PERMANENT WATER HOLDING SITES:**

Ornamental ponds, fountains, cesspools, abandoned swimming pools, gutters, construction site depressions, septic tanks, flooded basements, gutters, animal waste lagoons, livestock runoff lagoons, sewers, waste water impoundments associated with organic pollutants & industrial runoff, waste settling ponds, tire tracks, landfills, salvage yards, tire dumps, vehicle impounds, junk yards, manmade depressions and vegetation-choked phosphate pits.

**NATURAL AND ARTIFICIAL WATER HOLDING CONTAINERS:**

Tires, hollow trees and tree holes, potted plants, bird baths, rain barrels, flooded roof tops, flower pots, buckets, and abandoned vehicles.

**FIRST AID**

**IF IN EYES:**

- Hold eye open and rinse slowly and gently with water for 15-20 minutes.
- Remove contact lenses, if present, after the first 5 minutes, then continue rinsing.
- Call a poison control center or doctor for treatment advice.

Have the product container or label with you when calling a poison control center or doctor, or going for treatment. For information regarding medical emergencies or pesticide incidents, call 1-888-740-8712.

**PRECAUTIONARY STATEMENTS  
HAZARDS TO HUMANS AND DOMESTIC ANIMALS**

**CAUTION:** Causes moderate eye irritation. Avoid contact with eyes. Wash hands thoroughly with soap and water after handling and before eating, drinking, chewing gum, or using tobacco.

**ENVIRONMENTAL HAZARDS**

This pesticide is toxic to fish and aquatic invertebrates. Do not apply directly to treated, finished drinking water reservoirs or drinking water receptacles when the water is intended for human consumption. **This product must only be applied to catch basins and listed sites, which do not drain into natural water bodies.** Do not apply to areas where surface water is present, or to intertidal areas below the mean high water mark. Do not contaminate water when disposing of equipment washwater or rinsate.

**STORAGE AND DISPOSAL**

Do not contaminate water, food or feed by storage and disposal.

**PESTICIDE STORAGE:**

Keep this product in its tightly closed original container. Store in a cool dry (preferably locked) area that is away from water, other pesticides fertilizers, veterinary supplies, food or feed, in a place that is inaccessible to children and animals.

**PESTICIDE DISPOSAL:**

To avoid wastes, use all material in this container by application according to label directions. If wastes cannot be avoided, offer remaining product to a waste disposal facility or pesticide disposal program.

**CONTAINER HANDLING:**

Nonrefillable container. Do not reuse or refill this container. Offer for recycling if available, or puncture and dispose of empty container in a sanitary landfill, or by other procedures approved by state and local authorities.



EPA Reg. No. 1021-2819  
EPA Est. No. 1021-MN-2  
Rev. 0818-1018



Sumilarv® is a registered trademark of Sumitomo Chemical Co., Ltd.  
MGK® is a registered trademark of McLaughlin Gormley King Company.  
Manufactured for MGK®, ©2018 MGK. All rights reserved.  
8810 Tenth Avenue North, Minneapolis, MN 55427